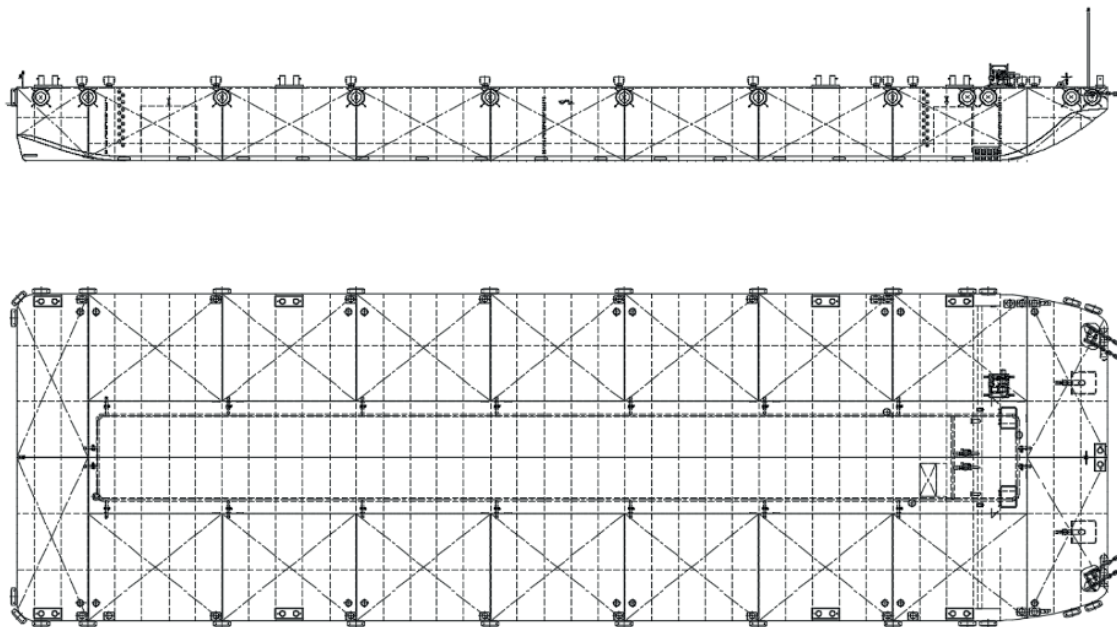


Osprey Intrepid

TECHNICAL DETAILS

| | | | |
|-----------------|---|----------------|-----------------------|
| Type of vessel | Flat-top Barge with internal ballast system | Freeboard min. | 1.20m |
| Class | ABS | Draught max. | 4.90m |
| Trading area | Unrestricted Navigation | GT/NT | 4146/1248 |
| Main dimensions | 91.50 x 27.40 x 6.10 | Deck load max | 20 ton/m ² |
| Cargo capacity | 9906 ton | | |






Details believed to be correct but not guaranteed

Osprey Marine Services BV

c/o Landfall Marine Construction BV
De Schans 38, 2983 GT Ridderkerk, Netherlands

enquiries@ospreyms.nl | +31 10 3138 100

www.ospreyms.nl

 Osprey Group
 @ospreytweets
 @osprey_group

 @ospreygroup
 @ospreygroup
 Osprey Group