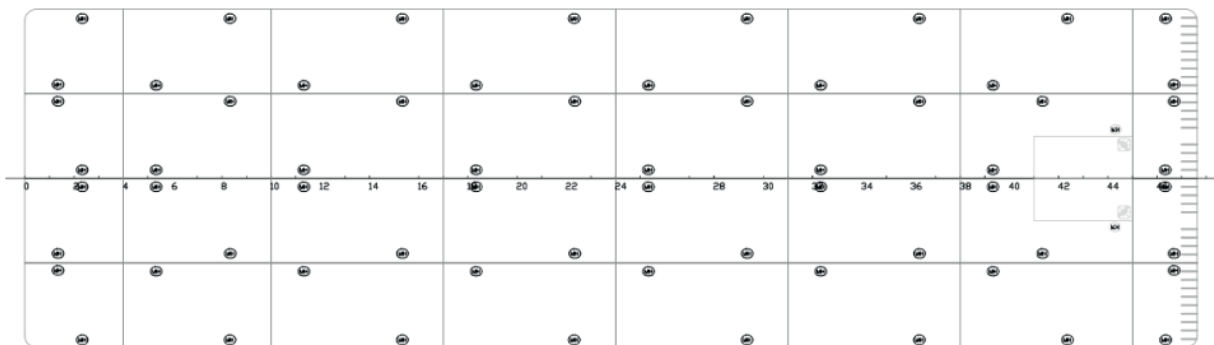
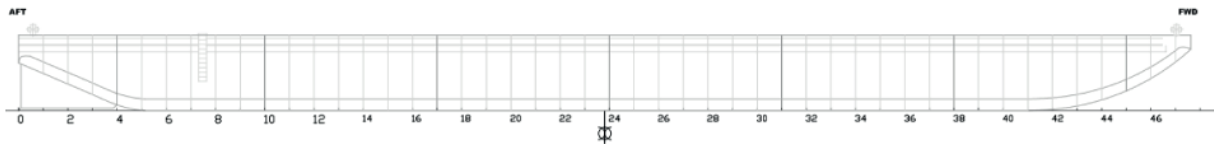


# Osprey Carrier II

### TECHNICAL DETAILS

Type of vessel	Flat-top Pontoon	Freeboard min.	1.15m
Class	ABS	Draught max.	3.75m
Trading area	Unrestricted Navigation	GT/NT	2125/637
Main dimensions	76.02 x 22.00 x 4.90	Deck load max	15 ton/m <sup>2</sup>
Cargo capacity	4746 ton		






Details believed to be correct but not guaranteed

### Osprey Marine Services BV

c/o Landfall Marine Construction BV  
De Schans 38, 2983 GT Ridderkerk, Netherlands

enquiries@ospreyms.nl | +31 10 3138 100

[www.ospreyms.nl](http://www.ospreyms.nl)

 Osprey Group  
 @ospreytweets  
 @osprey\_group

 @ospreygroup  
 @ospreygroup  
 Osprey Group