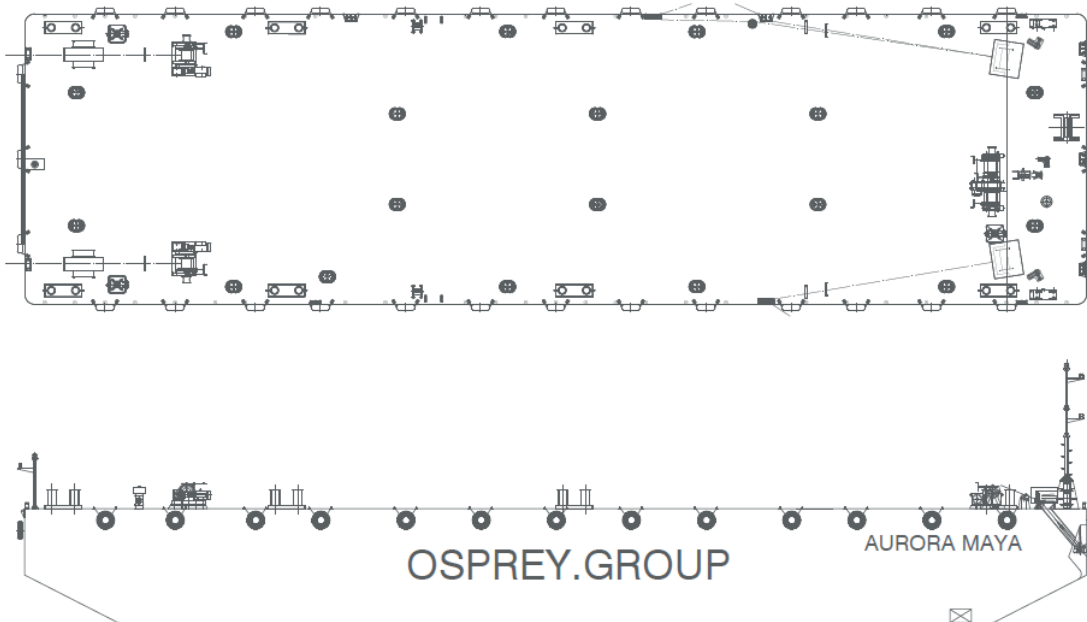


Aurora Maya

TECHNICAL DETAILS

Type of vessel	Flat-top Pontoon	Freeboard min.	2914
Class	ABS	Draught max.	2.9m
Trading area	Unrestricted Service	GT/NT	1168 / 350 tons
Main dimensions	53.00 x 14.50 x 5.80	Deck load max	15 ton/m ²
Cargo capacity	1554 tons	Spuds	N/A



Details believed to be correct but not guaranteed

Osprey Marine Services BV

c/o Landfall Marine Construction BV
De Schans 38, 2983 GT Ridderkerk, Netherlands

enquiries@ospreyms.nl | +31 10 3138 100

www.ospreymarine.nl

[/ospreygroup](https://www.linkedin.com/company/ospreygroup)

[@ospreygroup](https://www.facebook.com/ospreygroup)

[@ospreytweets](https://twitter.com/ospreytweets)

[@osprey_group](https://www.instagram.com/osprey_group)

[@ospreygroupvideos](https://www.youtube.com/channel/UCospreygroupvideos)

[@ospreygroup](https://www.youtube.com/channel/UCospreygroup)