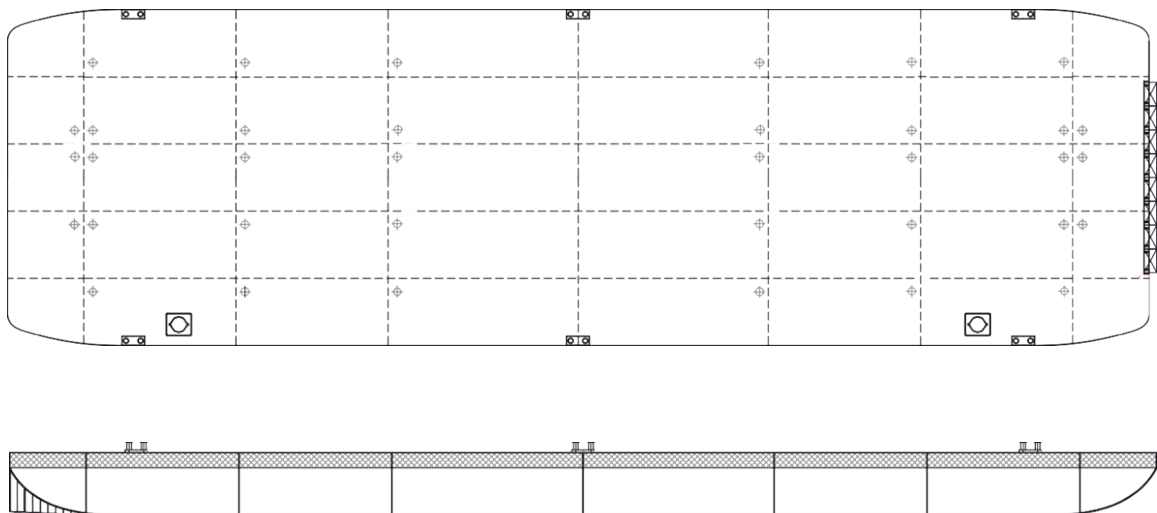


Osprey 7522

TECHNICAL DETAILS

Type of vessel	Flat-top Pontoon	Freeboard min.	0.98m
Class	Bureau Veritas	Draught max.	3.02m
Trading area	Unrestricted Navigation	GT/NT	1746/523
Main dimensions	75.00 x 22.00 x 4.00	Deck load max	15 ton/m ²
Cargo capacity	3478 ton	Spuds	Suitable for 2x 914mm diameter






Details believed to be correct but not guaranteed

Osprey Marine Services BV

c/o Landfall Marine Construction BV
De Schans 38, 2983 GT Ridderkerk, Netherlands

enquiries@ospreyms.nl | +31 10 3138 100

www.ospreyms.nl

 Osprey Group
 @ospreytweets
 @osprey_group

 @ospreygroup
 @ospreygroup
 Osprey Group