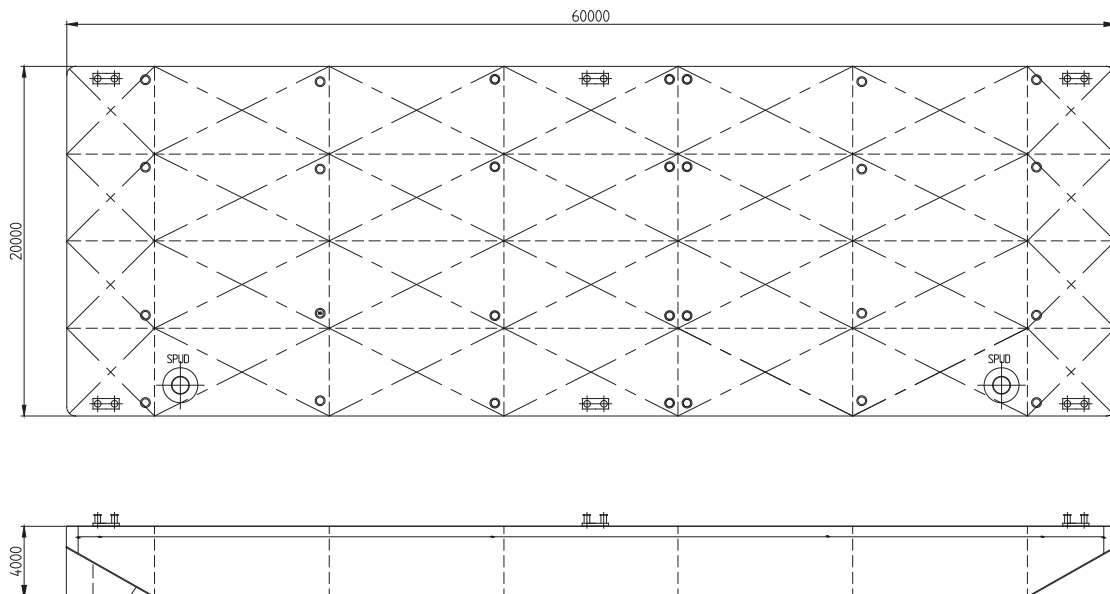


# Osprey 6022

### TECHNICAL DETAILS

Type of vessel	Flat-top Pontoon	Freeboard min.	0.79m
Class	Bureau Veritas	Draught max.	3.2m
Trading area	Unrestricted Navigation	Draught empty	0.54m
Main dimensions	60.00 x 22.00 x 4.00	GT/NT	1381/414
Cargo capacity	3262 ton	Deck load max	20 ton/m <sup>2</sup>
		Spuds	Suitable for 2 spuds ø914 mm






Details believed to be correct but not guaranteed

### Osprey Marine Services BV

c/o Landfall Marine Construction BV  
De Schans 38, 2983 GT Ridderkerk, Netherlands

enquiries@ospreyms.nl | +31 10 3138 100

### www.ospreyms.nl

 Osprey Group  
 @ospreytweets  
 @osprey\_group

 @ospreygroup  
 @ospreygroup  
 Osprey Group