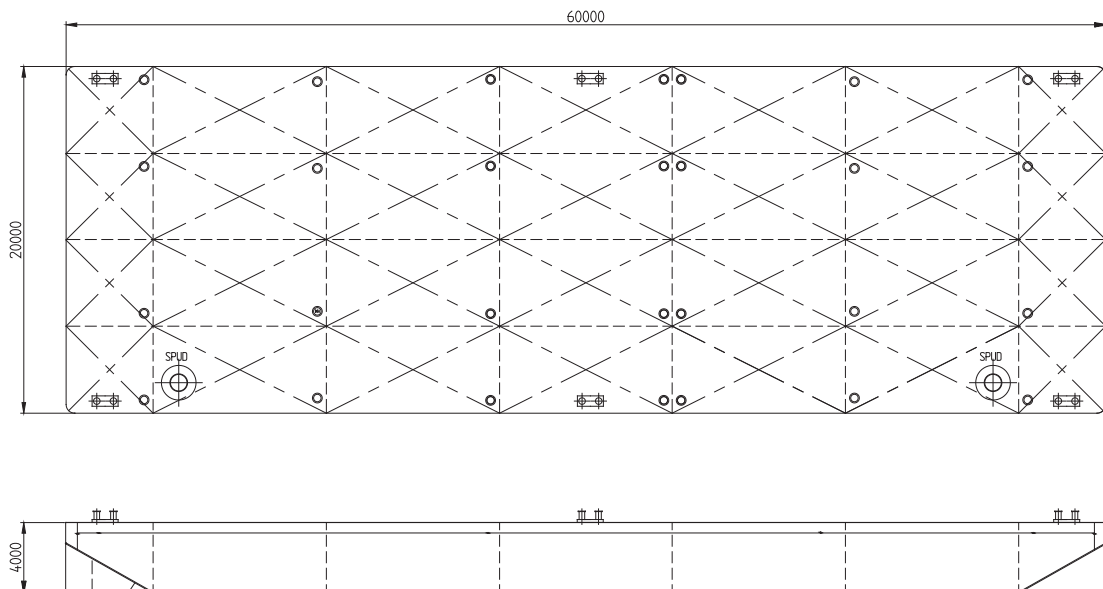


Osprey 6020

TECHNICAL DETAILS

Type of vessel	Flat-top Pontoon	Freeboard min.	0.82m
Class	Bureau Veritas	Draught max.	3.18m
Trading area	Unrestricted Navigation	Draught empty	0.54m
Main dimensions	60.00 x 20.00 x 4.00	GT/NT	1240/372
Cargo capacity	3050 ton	Deck load max	10 ton/m ²
		Spuds	Suitable for 2 spuds ø914 mm



Details believed to be correct but not guaranteed

Osprey Marine Services BV

c/o Landfall Marine Construction BV
De Schans 38, 2983 GT Ridderkerk, Netherlands

enquiries@ospreyms.nl | +31 10 3138 100

www.ospreyms.nl

[in](#) Osprey Group
[t](#) @ospreytweets
[i](#) @osprey_group

[f](#) @ospreygroup
[v](#) @ospreygroup
[y](#) Osprey Group