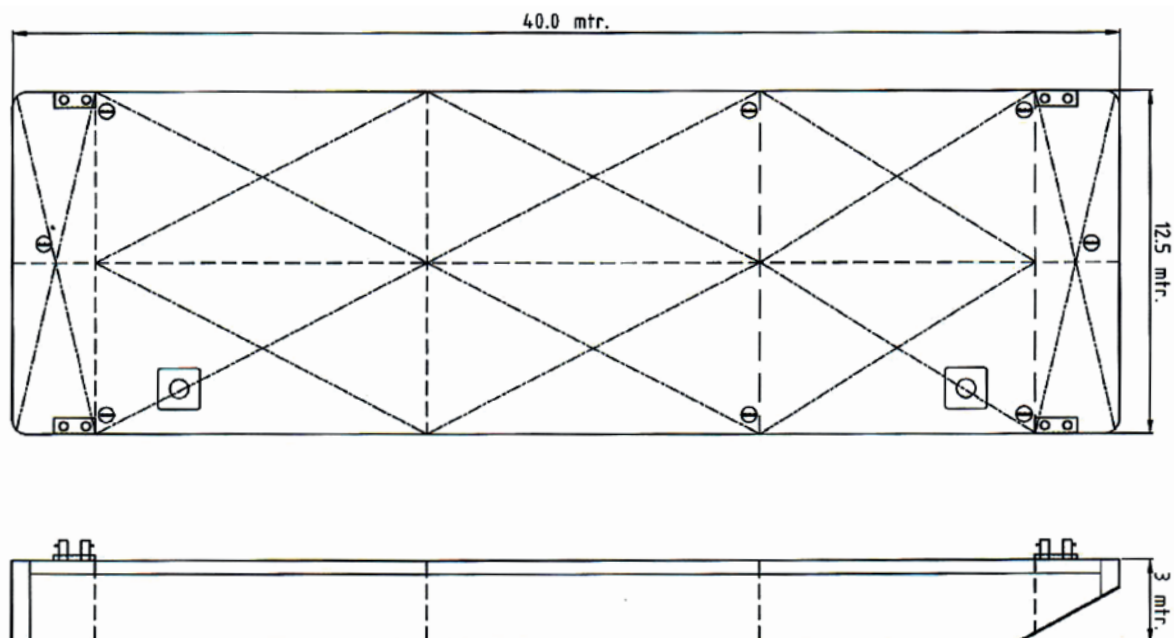


# Osprey 4012

## TECHNICAL DETAILS

Type of vessel	Flat-top Pontoon	Freeboard min.	0.60m
Class	Bureau Veritas	Draught max.	2.40m
Trading area	Unrestricted Navigation	GT/NT	412/151
Main dimensions	40.00 x 12.50 x 3.00	Deck load max	10 ton/m <sup>2</sup>
Cargo capacity	850 ton	Spuds	2x 610mm diameter






Details believed to be correct but not guaranteed

### Osprey Marine Services BV

c/o Landfall Marine Construction BV  
De Schans 38, 2983 GT Ridderkerk, Netherlands

enquiries@ospreyms.nl | +31 10 3138 100

[www.ospreyms.nl](http://www.ospreyms.nl)

 Osprey Group  
 @ospreytweets  
 @osprey\_group

 @ospreygroup  
 @ospreygroup  
 Osprey Group