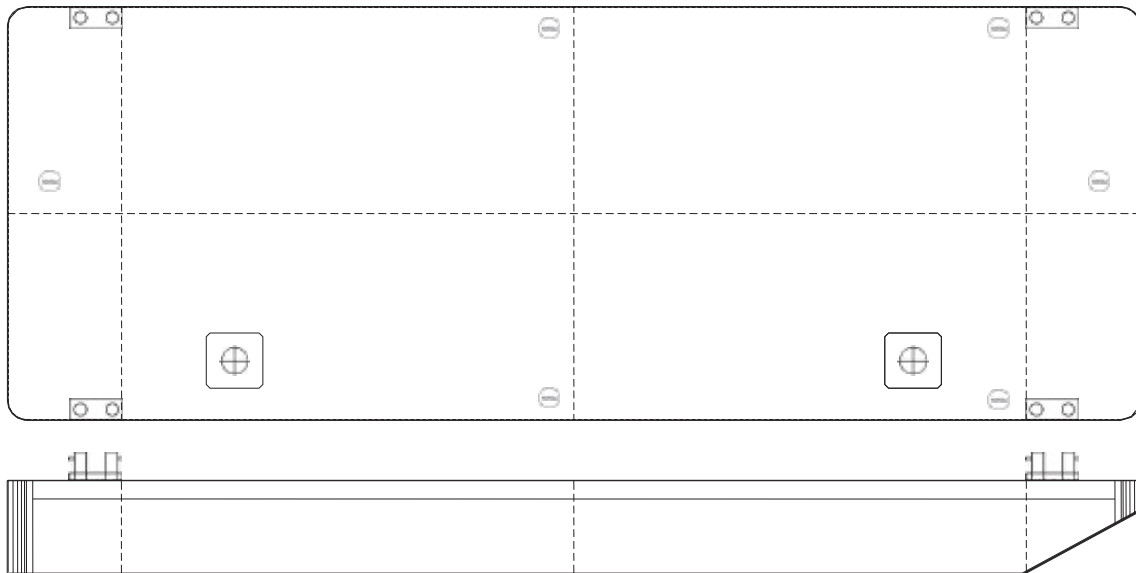


Osprey 3011A

TECHNICAL DETAILS

Type of vessel	Flat-top Pontoon	Freeboard min.	0.57m
Class	Bureau Veritas	Draught max.	1.93m
Trading area	Unrestricted Navigation	GT/NT	208/62
Main dimensions	30.00 x 11.20 x 2.50	Deck load max	6 ton/m ²
Cargo capacity	500 ton	Spuds	Suitable for 2x 610mm diameter






Details believed to be correct but not guaranteed

Osprey Marine Services BV

c/o Landfall Marine Construction BV
De Schans 38, 2983 GT Ridderkerk, Netherlands

enquiries@ospreyms.nl | +31 10 3138 100

www.ospreyms.nl

 Osprey Group
 @ospreytweets
 @osprey_group

 @ospreygroup
 @ospreygroup
 Osprey Group